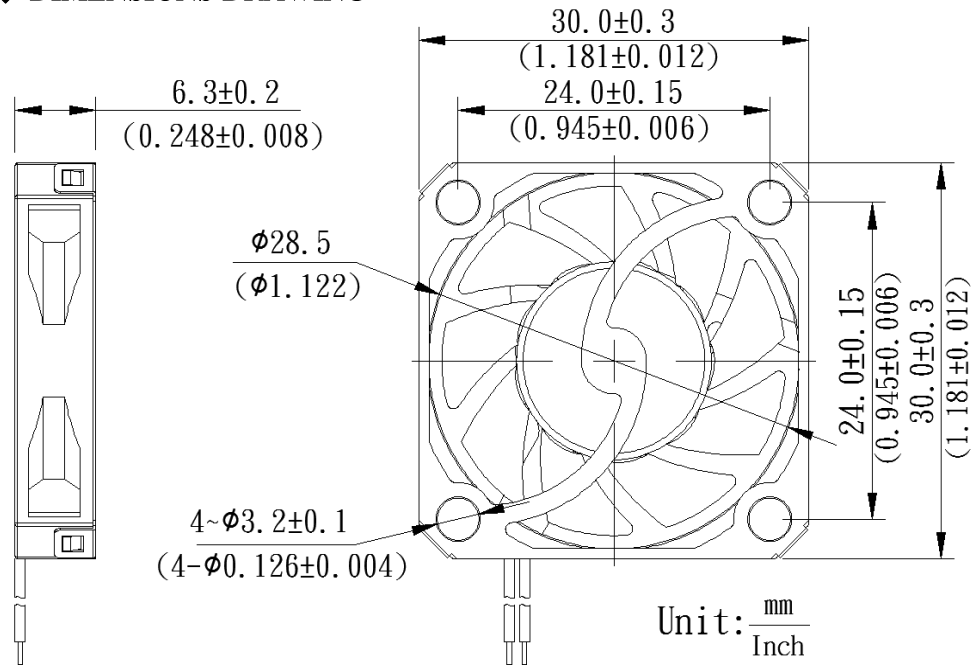
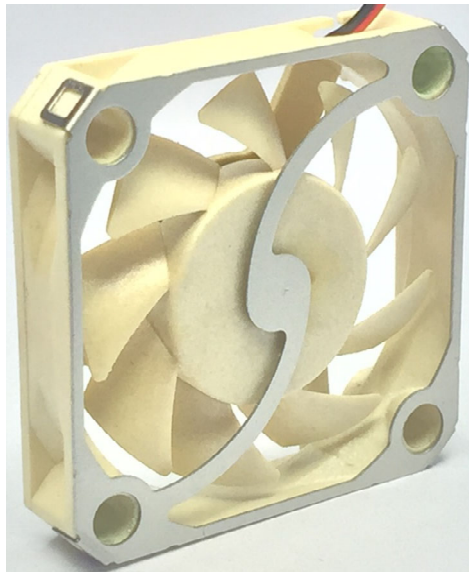




GLOBEFAN TECHNOLOGY CO., LTD.

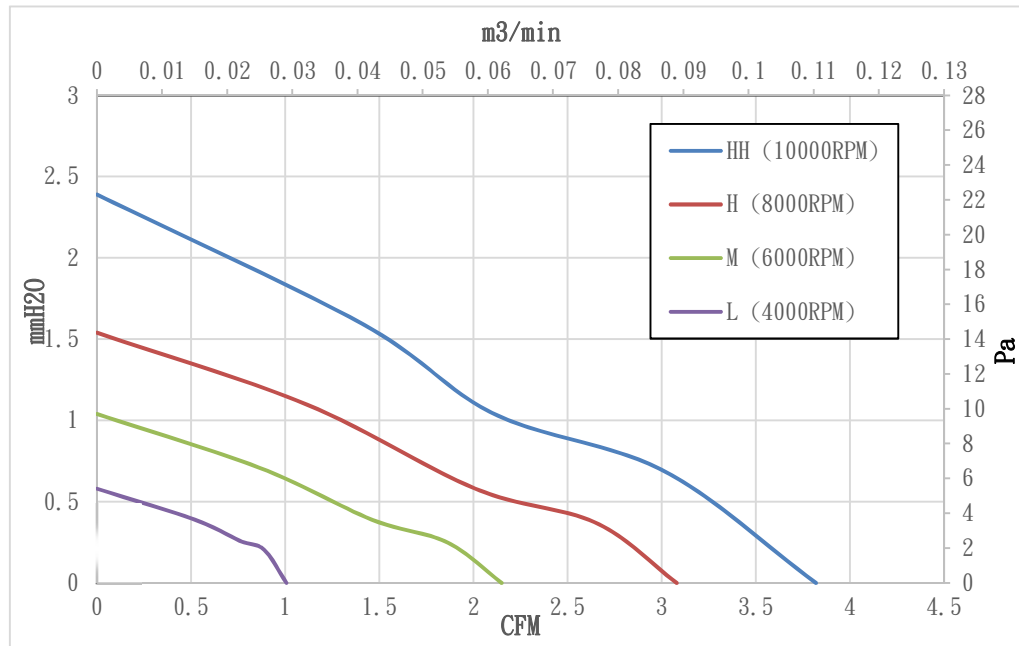
No. 28, 3 Lane Zhongxinjin Road, Jin Industry District Shoei Koou Village,
 Da Laang Town, Dungguan City, Guangdong Province, China
 Tel : +86 769 83182898~9 Fax : +86 769 83182897

◆ DIMENSIONS DRAWING



Unit: $\frac{\text{mm}}{\text{Inch}}$

◆ 30x30x6mm DC Axial Fan P/Q Curves (At rated speed)



* BEARING TYPE

- Sleeve bearing

* Electrical Function

- PWM (Pulse Width Modulation)
- Frequency Generator Output Signal
- RD (Lock Detection) Output Signal

* Material

Impeller: Plastic (LCP E130i)
 Frame : Plastic (LCP E130i)

* Lead wires

UL3302 32AWG or Equivalent
 Red or Yellow Wire Positive (+)
 Black Wire Negative (-)
 Green Wire Signal (FG)
 Blue Wire PWM Control Signal

* Weight : 3.6g (0.13 oz)

MODEL	Operating Voltage Range	Rated Voltage	Rated Current	Rated Input Power	Speed	Maximum Air Flow		Maximum Air Pressure		Noise
Part No.	VDC	VDC	Amp	Watts	R.P.M	m ³ /min	CFM	mmH ₂ O	Pa	dB(A)
TA0LS030605HH	2.3 ~ 5.5	5	0.40	2.0	10000±10%	0.11	3.82	2.39	23.44	29.0
TA0LS030605H	2.5 ~ 5.5	5	0.30	1.5	8000±10%	0.09	3.08	1.54	15.10	24.6
TA0LS030605M	3.0 ~ 5.5	5	0.20	1.0	6000±10%	0.06	2.15	1.04	10.20	20.1
TA0LS030605L	4.0 ~ 5.5	5	0.15	0.8	4000±10%	0.03	1.01	0.58	5.69	18.2

* Function type is optional.

* The max. air flow and speed are measured in free air; max. air pressure is measured at close to zero air flow.

* Noise is measured in anechoic chamber in free air, one meter from intake side.

* All readings are typical values at rated voltage.

* Specifications are subject to change without notice.